

User Guide

Dear customer,

Thank you for purchasing our product! We assure you that we put a lot of hard work in it and that it was done with outmost care so you can make the best out of it. If you have any difficulties feel free to contact us with any questions and we will get back to you as soon as possible. While we have reviewed the item multiple times, some problems might have passed our notice - as such we encourage you, our customer, to contact us if you find any so we can correct it and improve the quality of our product. As for the feedback, we would really appreciate your positive rating, as it will encourage us to create more of them for your future convenience.

We look forward to working with you,
Yours sincerely,
Zeisla

Contents

4	Editing a Smart Object
4	Paper Texture Control
4	Shadow Intensity Control
4	Changing the Background
5	Foil Stamping
6	Tips

Editing a Smart Object

1. Select the Smart Object from the Layers panel.
2. Choose Layer > Smart Objects > Edit Contents.
3. Insert your design, then choose File > Save.
4. Those changes will be reflected upon returning to your main psd file.

Texture Control

You can choose between the following two options:

- Uncoated (Matte)
- Coated (Glossy)

Click the eye icon next to the layer you want to use. These layers are located in “Your Design Here” layer group.

You can experiment with the opacity of these layers in order to alter the appearance of your design. Higher opacity will result in higher level of specular reflections.

You can use the Levels adjustment on these layers to further edit the texture, increase or decrease contrast and alter the level of reflections.

Shadow Intensity Control

1. Select the “Light” layer from the Layers panel.
2. Experiment with Opacity to change shadow intensity.

Changing the Background

1. Select the “Your Background Here” Smart Object Layer from the Layers panel.
2. Edit the Smart Object (see “Editing a Smart Object”).

If you are using texture other than paper, turn off visibility of “Uncoated Paper Texture” Layer.

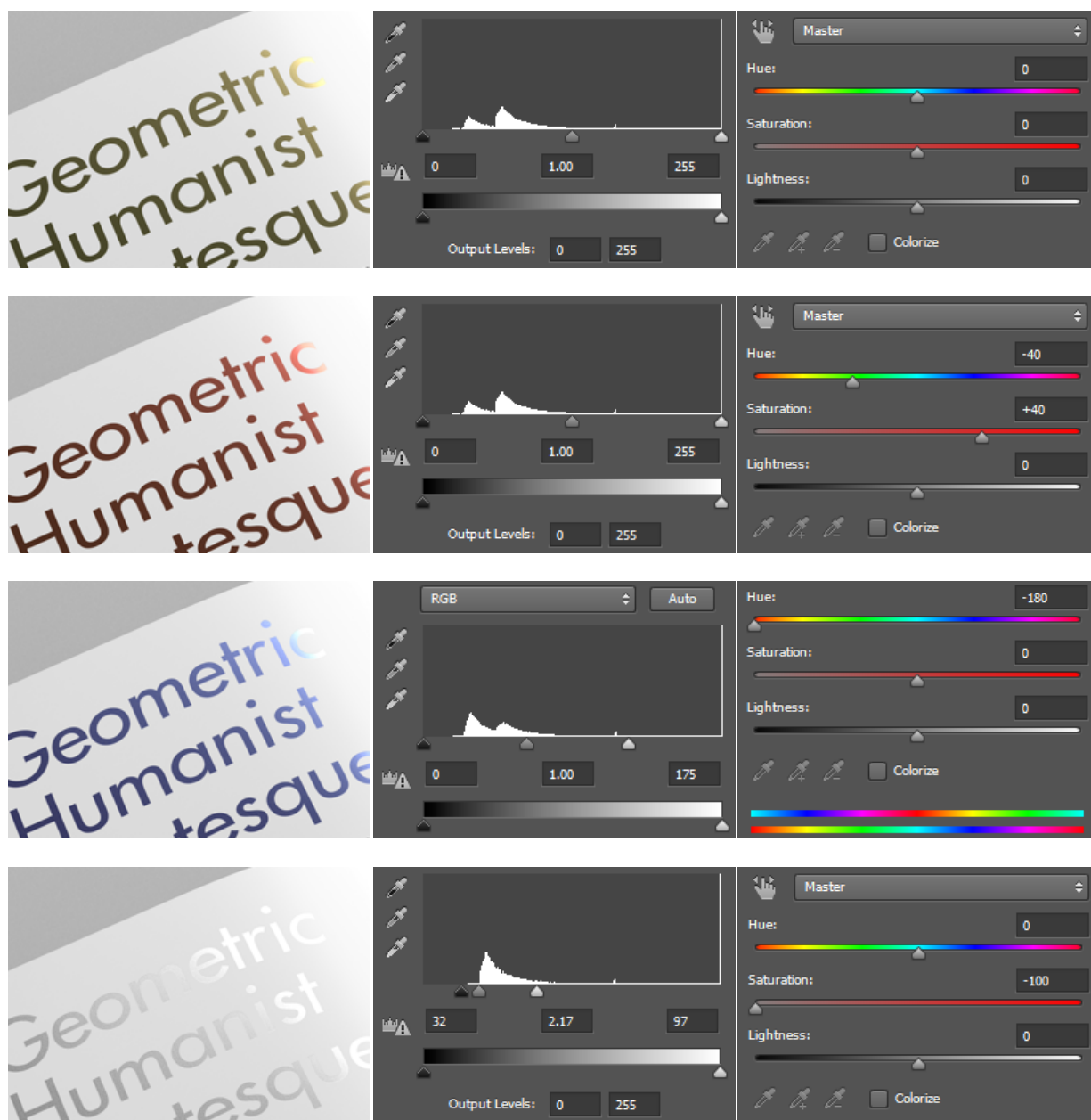
Foil Stamping

1. Select the “Your Foil Stamping Design Here” Smart Object Layer from the Layers panel.
2. Edit the Smart Object (see “Editing a Smart Object”).

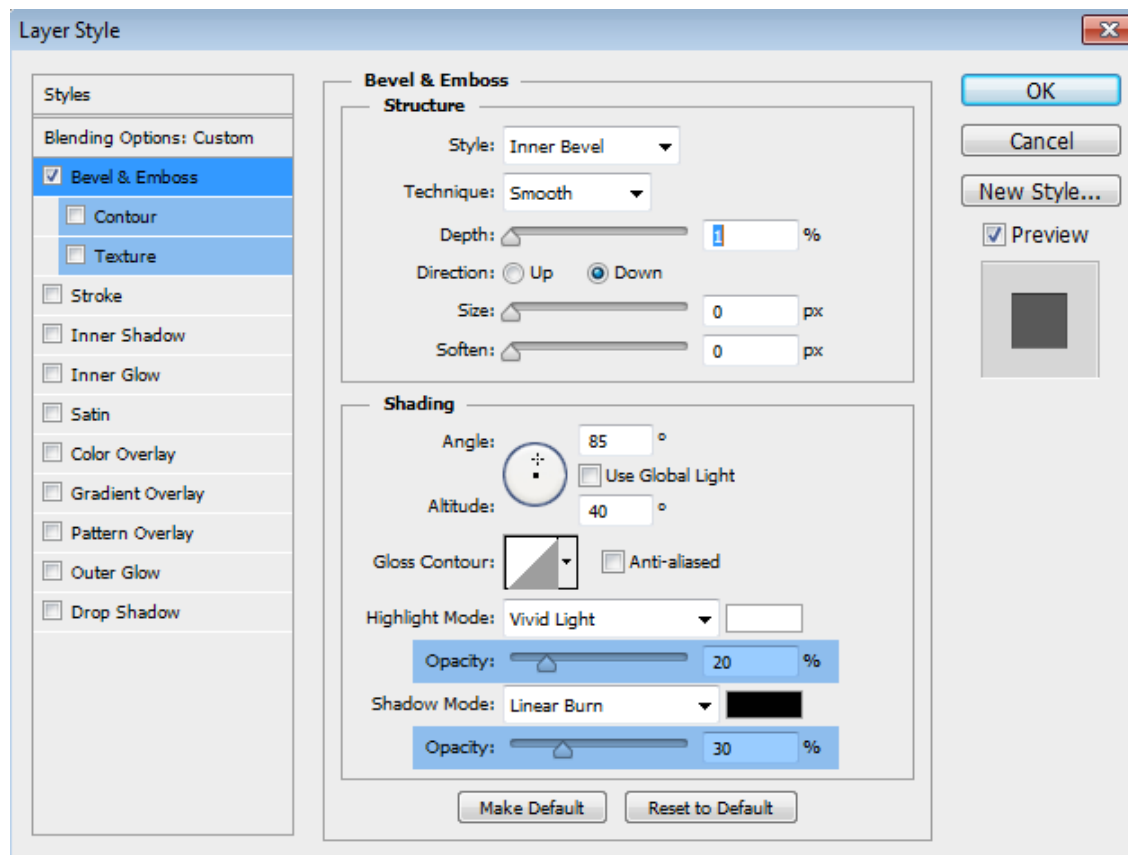
Modify the hue value in the Hue/Saturation Adjustment panel to change the foil color.
To achieve silver foil effect reduce saturation to minimum.

Experiment with the Level adjustment layer to alter the contrast and alter the foil appearance until you are satisfied with the look.

If your foil stamping design element falls out of the foil gradient areas you can select the “Foil” layer and move it manually with the Move Tool and/or rotate it until it aligns with your design element. Be careful not to move the foil to much so that you disturb the scene realism.



To change the Emboss depth experiment with the opacity of Highlight Mode and Shadow Mode in the Bevel and Emboss dialog box. To open “Layer Styles” right click on the “Your Foil Stamping Design Here” group and choose “Blending Options” from the drop-down menu.



Tips

Due to software limitations it is not possible to create one setting that will work perfectly for all designs and images, this is why we strongly advise you to experiment with the Opacity, Blending Modes and Levels where suggested in order to edit the appearance according to your needs.

Experiment with levels once you are done with the smart object editing to achieve the desired brightness and contrast.

Rotate and crop the image to achieve different results.

Layer styles and masks can look different on a different magnification value. After you are finished with editing, Flatten your image or Copy Merged everything into a new layer to avoid this effect.

